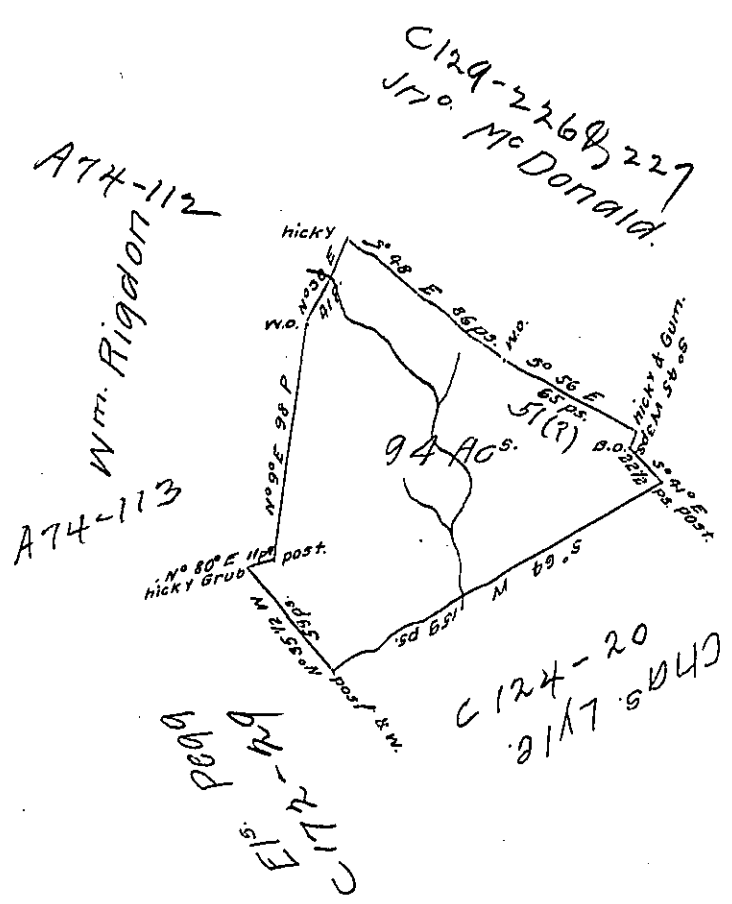


190



A draught of a survey called "Goshen" situate on the waters of Peters creek in Washington County containg 94 ac^s and the usual allow^{ce} for Highways &c. executed Oct^r 1st 1788 in pursuance of a warrant granted to James Wallace for 90 Ac^s dated Sept^r 9th 1788

Signed

Dan^l Brodhead Esq^r S. G.^t }
 Presley Nevill } D.S.
 Matt^r Ritchie }

In testimony that the above is a True copy of the original Remaining in the Surveyor Generals Office I have hereunto set my hand & Seal of Office at Philadelphia this 12th January 1791



Daniel Brodhead S. G.

IN TESTIMONY that the above is a copy of the original remaining on file in the Department of Internal Affairs of Pennsylvania, made conformably to an Act of Assembly approved the 16th day of February, 1833, I have hereunto set my Hand and caused the Seal of said Department to be affixed at Harrisburg, this twenty-first day of May 1907.

Henry Howell
 Secretary of Internal Affairs.